

2013/14 FACILITY LOCATION FOR BULLIS CHARTER SCHOOL

Los Altos School District

January 28, 2013 Board Meeting

BACKGROUND

Timeline

- November 1 – BCS submits facilities request
- December 1 – Deadline for District objections (if any) to enrollment projections
- January 2 – Deadline for BCS response to District objections
- February 1 – Preliminary Offer due
- March 1 – BCS response to Prelim Offer
- April 1 – Final Offer due

BCS Facilities Request

- Enrollment Projection
 - BCS projects 615 in-district students
 - 140 more students than current year (29.5% growth)
 - 542 K-6 students and 73 grade 7/8 students
 - Assumes 1 additional class of students for each grade K-3
- Location Preference
 - BCS identifies Covington School as preferred location, on an exclusive basis (not shared)

BCS enrollment

- District submitted objections by Dec 1
- District offers the following counter-projections

Grade Levels	BCS	District
K – 3	320	300
4 – 6	222	216
7 – 8	73	56
Total	615	572

Board Designated Public Input Opportunities

- Nov 5 – special meeting
- Nov 13 – regular board meeting
- Dec 3 – special facilitated meeting
- Dec 10 – regular board meeting
- Jan 14 – regular board meeting
- Jan 28 - regular board meeting

OPTIONS

Options identified

1. Co-locate BCS at Egan and Blach campuses
- ~~2. Identify a 10th site either inside or outside the District~~
- ~~3. Place BCS on Covington campus and relocate Covington students to other campuses~~
- ~~4. Place BCS on the Santa Rita campus and relocate Santa Rita students to the current BCS campus at Egan~~
- ~~5. BCS configured across three LASD campuses~~

Option 1 – co-locate at Egan/Blach

- Configuration options analyzed
 - K-5 at Egan and 6-8 at Blach
 - K-4 at Egan and 5-8 at Blach
 - K-3 at Egan and 4-8 at Blach
 - *K-6 at Egan and 7-8 at Blach – not requested but done since it represents status quo*
- Impacts of various configurations
 - Staff will provide estimated costs
 - Costs based on 6k rent and 45k installation per 960 SF unit
 - Staff will provide information on other impacts
- All configuration options are based on district's counter-projection of enrollment

K-5 at Egan; 6-8 at Blach

- Students
 - 443 at Egan
 - 129 at Blach
- Facilities Needed
 - Egan - 1 additional classroom
 - Blach –
 - 3 additional classrooms
 - 2 additional specialized spaces (buildings)
- Cost Estimate
 - \$306,000

K-5 at Egan; 6-8 at Blach

- Other Impacts
 - Sharing of certain specialized spaces with BCS 7th & 8th graders impacts Blach program/students
 - Additional traffic at Blach
 - Approximately same footprint at Egan as in current year

K-4 at Egan; 5-8 at Blach

- Students
 - 369 at Egan
 - 203 at Blach
- Facilities Needed
 - Egan – 2 classrooms no longer needed
 - Blach –
 - 6 additional classrooms
 - 3 additional specialized spaces
- Cost Estimate
 - \$447,000 – includes moving classrooms from Egan to Blach

K-4 at Egan; 5-8 at Blach

- Other Impacts
 - Sharing of certain specialized spaces impacts Blach program/students
 - Significantly more traffic at Blach; reduced traffic at Egan
 - Lunch/recess/PE time for more BCS students increases noise while Blach classes are in session
 - Reduces footprint of BCS at Egan

K-3 at Egan; 4-8 at Blach

- Students
 - 300 at Egan
 - 272 at Blach
- Facilities Needed
 - Egan – 4 classrooms no longer needed
 - Blach –
 - 8 additional classrooms
 - 5.5 additional specialized spaces
- Cost Estimate
 - \$664,500 – includes moving classrooms from Egan to Blach

K-3 at Egan; 4-8 at Blach

- Other Impacts
 - Sharing of certain specialized spaces impacts Blach program/students
 - Significantly more traffic at Blach; reduced traffic at Egan
 - Lunch/recess/PE time for more BCS students increases noise while Blach classes are in session
 - Reduces footprint of BCS at Egan

K-6 at Egan; 7-8 at Blach

- Students
 - 516 at Egan
 - 56 at Blach
- Facilities Needed
 - Egan – 4 additional classrooms
 - Blach –
 - no additional classrooms
 - 1 additional specialized space
- Cost Estimate
 - \$255,000 (same as K-5/6-8 configuration)

K-6 at Egan; 7-8 at Blach

- Other Impacts
 - Sharing of certain specialized spaces impacts Blach program/students
 - Some additional traffic at both Blach and Egan
 - Could increase BCS footprint at Egan

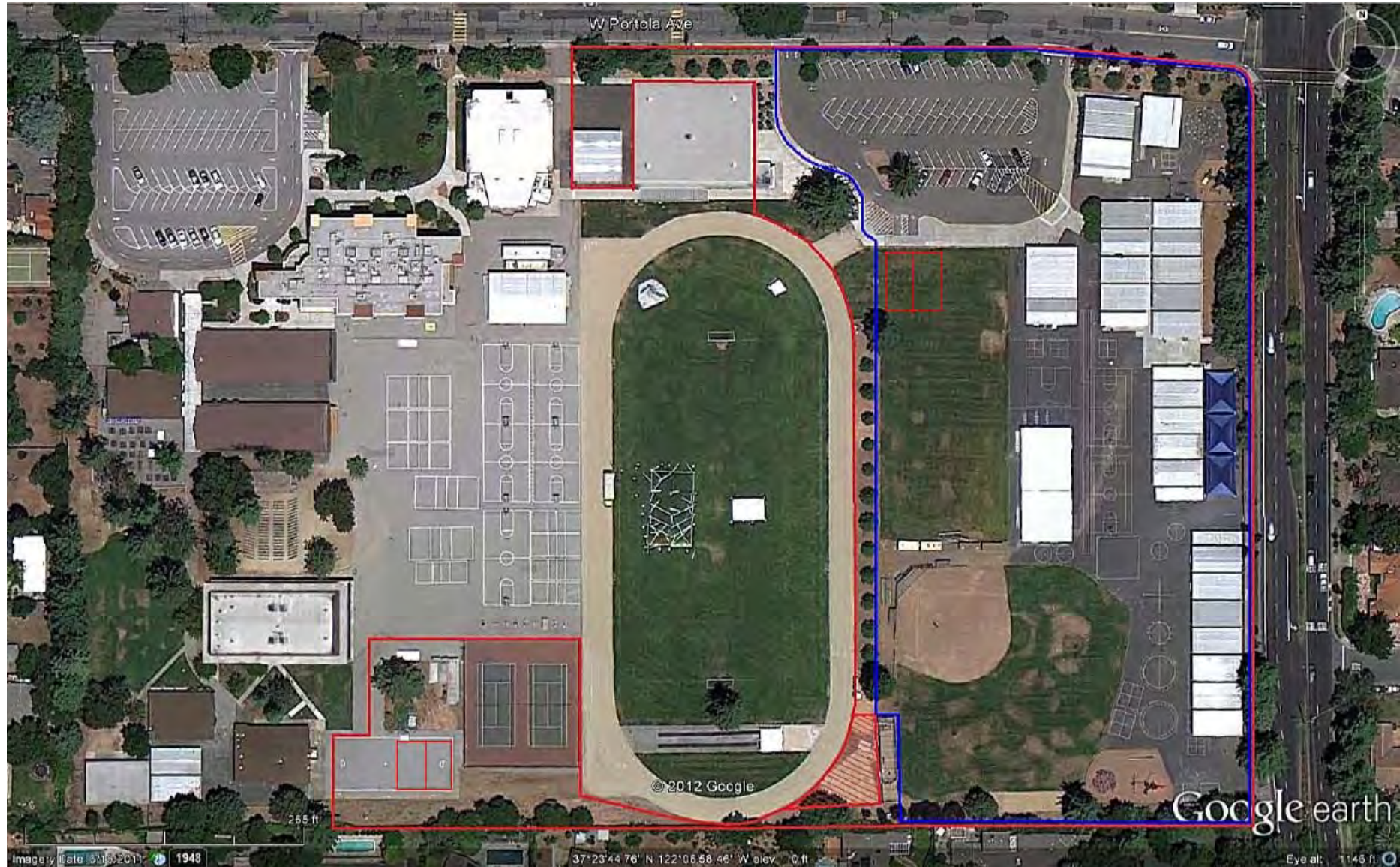
Next Steps

- Jan 28 – tonight
 - Staff to review analysis of different grade level configurations
 - Board to decide which configuration to use for prelim offer
 - Board to consider preliminary offer details
- By February 1
 - Deadline for submitting preliminary offer to BCS

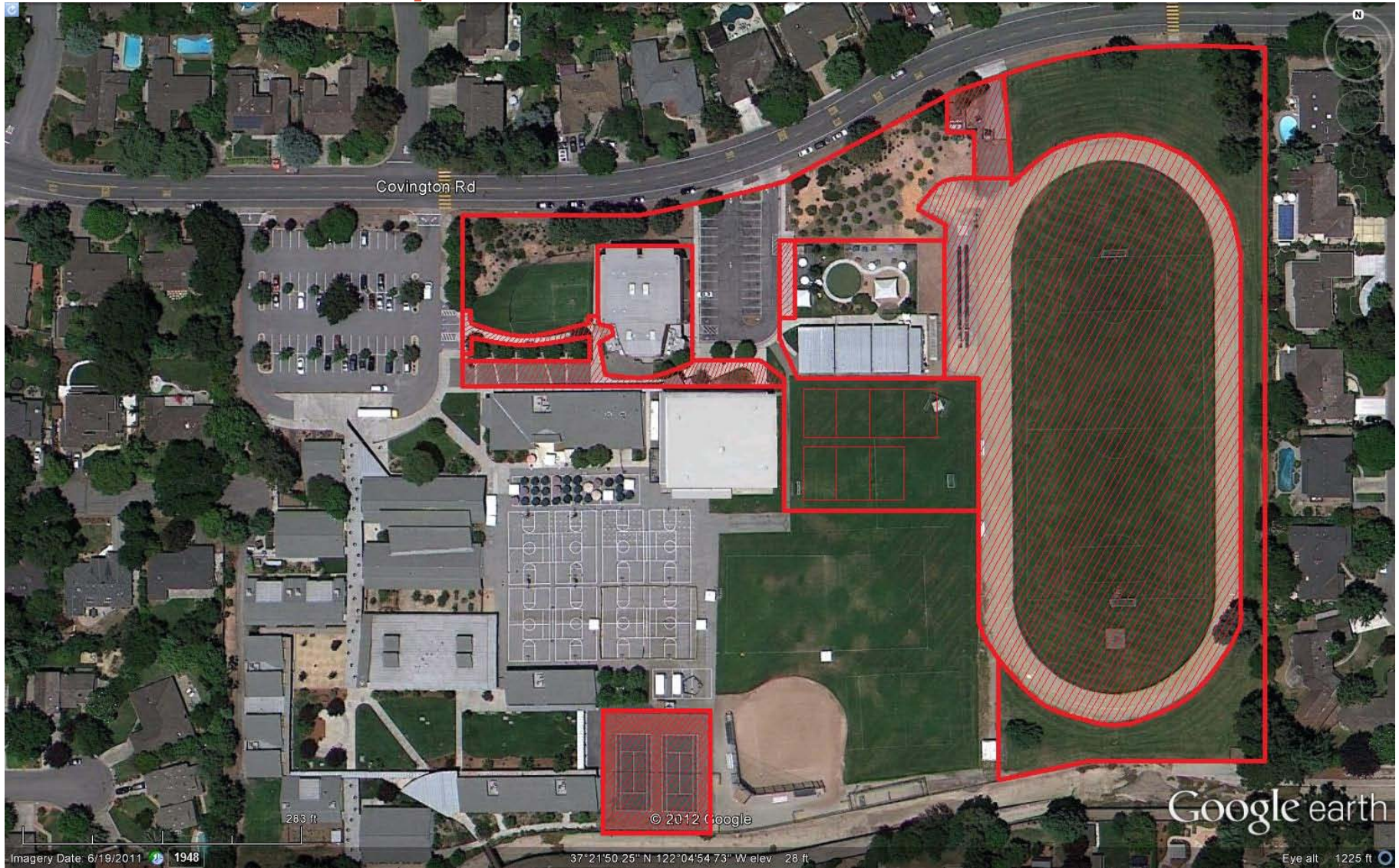
APPENDIX

Maps of Egan and Blach campuses using current year BCS footprints and showing possible location for additional portables

Egan campus



Blach campus



	K-6 at Egan/7-8 at Blach			K-5 at Egan/6-8 at Blach			K-4 at Egan/5-8 at Blach			K-3 at Egan/4-8 at Blach		
	<u>Egan</u>	<u>Blach</u>	<u>Total</u>	<u>Egan</u>	<u>Blach</u>	<u>Total</u>	<u>Egan</u>	<u>Blach</u>	<u>Total</u>	<u>Egan</u>	<u>Blach</u>	<u>Total</u>
Acreage:	8.1	1.8	9.9	7.3	3.2	10.5	6.6	4.5	11.1	5.6	5.5	11.1
Students:												
Kindergarten	75			75			75			75		
Grade 1	75			75			75			75		
Grade 2	75			75			75			75		
Grade 3	75			75			75			75		
Grade 4	69			69			69				69	
Grade 5	74			74				74			74	
Grade 6	73				73			73			73	
Grade 7		30			30			30			30	
Grade 8		26			26			26			26	
Total	516	56	572	443	129	572	369	203	572	300	272	572
Classrooms:												
Kindergarten	2			2			2			2		
Grade 1-3	11			11			11			11		
Grade 4-6	8			5	3		2	6			8	
Grade 7-8		2			2			2			2	
Total	21	2	23	18	5	23	15	8	23	13	10	23
<u>less, Current</u>	<u>17</u>	<u>2</u>	<u>19</u>	<u>17</u>	<u>2</u>	<u>19</u>	<u>17</u>	<u>2</u>	<u>19</u>	<u>17</u>	<u>2</u>	<u>19</u>
No. Needed	4	0	4	1	3	4	-2	6	4	-4	8	4
Specialized Space:												
No. Needed	0	1	1	0	2	2	0	3	3	0	5.5	5.5
Total Needed	4	1	5	1	5	6	-2	9	7	-4	13.5	9.5
Cost:												
Rent	\$ 24,000	\$ 6,000	\$ 30,000	\$ 6,000	\$ 30,000	\$ 36,000	\$ (12,000)	\$ 54,000	\$ 42,000	\$ (24,000)	\$ 81,000	\$ 57,000
Installation	\$ 180,000	\$ 45,000	\$ 225,000	\$ 45,000	\$ 225,000	\$ 270,000		\$ 405,000	\$ 405,000		\$ 607,500	\$ 607,500
Total	\$ 204,000	\$ 51,000	\$ 255,000	\$ 51,000	\$ 255,000	\$ 306,000	\$ (12,000)	\$ 459,000	\$ 447,000	\$ (24,000)	\$ 688,500	\$ 664,500

Acreage is based on CA school site guidelines and differentiated amount of space needed by age of student.

Specialized Spaces at Blach (for both JHS and Elem students)

	Grades 7-8 at Blach			Grades 6-8 at Blach		Grades 5-8 at Blach		Grades 4-8 at Blach	
	SF/ADA (equivalence standard from 12/13 final offer)	Proposed	SF Needed (per standard)	Proposed	SF Needed (per standard)	Proposed	SF Needed (per standard)	Proposed	SF Needed (per standard)
Library (project room)	7.75	546 SF	434	960 SF (not used)	1000	1440 SF (not used)	1573	1440 SF (not used)	2108
Office	5.4	1440 SF	302	1440 SF	697	1440 SF	1096	2400 SF	1469
Counseling/RSP	2.07	(in office)	116	(in office)	267	(in office)	420	(in office)	563
Restrooms, adult		(in office)		(in office)		(in office)		(in office)	
Storage	0.92	(in office)	52	(in office)	119	(in office)	187	(in office)	250
Custodial	0.27	(in office)	15	(in office)	35	(in office)	55	(in office)	73
Restrooms, child		480 SF		480 SF		480 SF		480 SF	
Tchr. Lounge	1.93	(in office)	108	(in office)	249	480 SF	392	960 SF	525
Servery	0.29	(in office)	16	(in office)	37	(in Lounge)	59	(in Lounge)	79
Computer Lab	3.29	960 SF	184	960 SF	424	960 SF	668	960 SF	895
Flex (Elem.)	2.74	n/a		(in Comp Lab)	200	(in Comp Lab)	403	960 SF	592
Multi		<i>shared</i>		<i>shared</i>		<i>shared</i>		<i>shared</i>	
Science Lab		<i>shared</i>		<i>shared</i>		<i>shared</i>		<i>shared</i>	
Engineering/Foods		<i>shared</i>		<i>shared</i>		<i>shared</i>		<i>shared</i>	
PE, track		<i>shared</i>		<i>shared</i>		<i>shared</i>		<i>shared</i>	
PE, tennis courts		<i>shared</i>		<i>shared</i>		<i>shared</i>		<i>shared</i>	
PE, gym		<i>shared</i>		<i>shared</i>		<i>shared</i>		<i>shared</i>	
PE, locker room		(in restrooms)		(in restrooms)		(in restrooms)		(in restrooms)	
Lunch area		in BCS Quad		in BCS Quad		in BCS Quad		in BCS Quad	
Blacktop (tennis courts)	135.47	13,210 SF	7586	13,210 SF	17476	13,210 SF	27500	13,210 SF	36848
Total Add'l Bldg SF		2880	1228	3840	3028	4800	4853	7200	6554
(# of buildings)		3	1.28	4	3.15	5	5.05	7.5	6.83
<u>less, Current</u>		<u>2</u>	<u>2</u>	<u>2</u>	<u>2</u>	<u>2</u>	<u>2</u>	<u>2</u>	<u>2</u>
No. Needed		1	-0.72	2	1.15	3	3.05	5.5	4.83

Note: Additional blacktop space (beyond tennis courts) would need to be made available under Grade 5-8 and 4-8 scenarios.