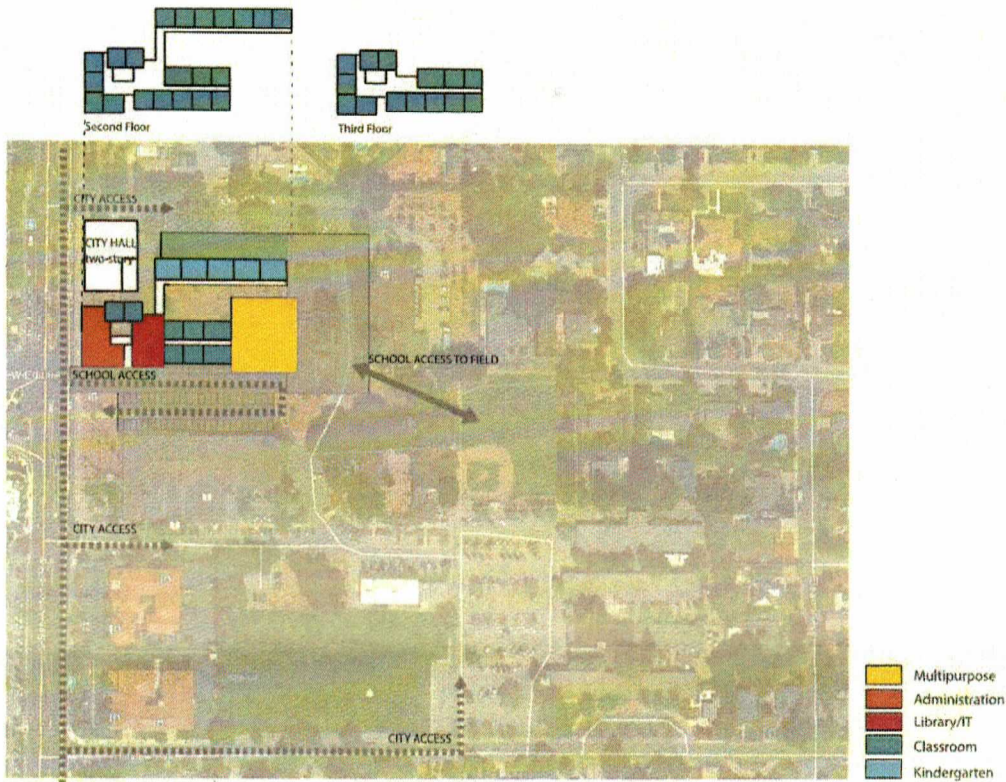


# Civic Center

Acreage: 5.9 acres

## Co-locate K-8 School at Civic Center



Enrollment:	900 K – 8 students; 200 are grades 7/8

**Note** – City comments in orange; District comments in blue

### Advantages:

1. Avoids closing a neighborhood school
2. Creates space at existing schools to handle enrollment growth
3. No net loss of field space (possible gain at Egan)
4. Preschool currently exists on site; **however, private pre-school will not remain on-site**
5. No U turns on San Antonio Road if traffic signal is installed
6. Closer to area of greatest enrollment growth
7. Possible to include shared theater space
8. Could provide funds to city for use in civic center rebuild; no new taxes

## Disadvantages:

### Traffic

1. Increased congestion around Civic Center/Downtown
  - a. Signal upgrade required at San Antonio Road/W. Edith Avenue/Main Street
  - b. New signal recommended at existing Civic Center driveway on San Antonio Road
  - c. Left turn lane on San Antonio Road for Civic Center driveway will require expansion
  - d. LASD school traffic will co-mingle with LAHS traffic
  - e. May require new signal timing and sequencing
2. Civic Center Parking
  - a. 90 parking spots are required for the Civic Center; new school site would displace approximately 50% of this parking
3. Civic Center Circulation
  - a. Proposed school "black top" eliminates access road between LAYC and Police Department
    - i. Police Department requires two access roads
    - ii. LAYC is in the proposed "black top" location
  - b. Proposed school buildings prevents access from existing Civic Center parking lot to the City Library
  - c. Proposed school access to field is through unimproved land between the Police Department and the History Museum
4. School Access
  - a. Drop-off and pick-up operations are controlled at the intersection of San Antonio Road/W. Edith Avenue/Main Street. Vehicles will queue and clear as the signal timing allows
  - b. Removal of access from parking lot east of the library does not allow pedestrian or bike facilities to connect to the Main Civic Center site and the sidewalk at the History Museum
5. Surrounding Impacts
  - a. Nearby streets will likely experience increased traffic and/or drop-off and pick-up operations

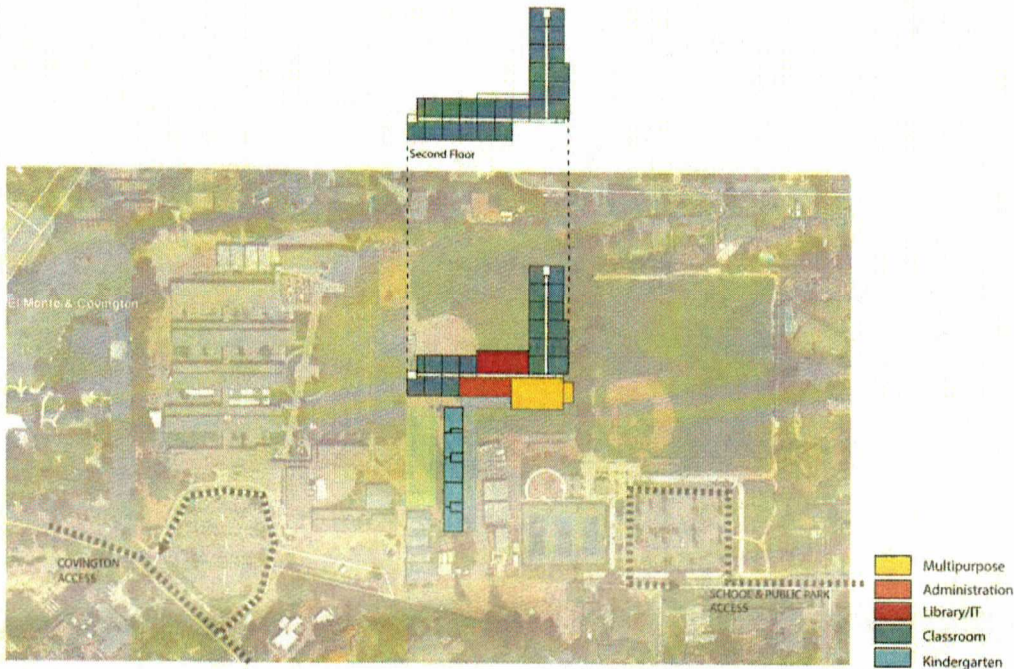
### Other

1. The Police Department not a good neighbor since suspects and certain criminals are required to come to the Police Department (some may have restrictions regarding their ability to be in proximity to schools.)
2. Conflict between school and public access to fields, history museum
3. Conflict with emergency traffic, police operations
4. Potential adjacency problem for city hall and school play space – noise, privacy
5. Three-story building will look large to Los Altos neighbors
6. Need for temporary City Hall for 12-18 months
7. Need to replace lost City open space in northern area of City
8. Need to replace facilities equivalent to the existing Los Altos Youth Center

# Covington School, Option I

Acreage: 15.5 acres

Co-locate BCS with Covington



Enrollment:	BCS (900 K – 8 students; 200 are grades 7/8)
	Covington (600 K – 6 students)

**Note** – City comments in orange; District comments in blue

**Advantages:**

**Traffic**

1. Potential separate vehicle routing
  - a. New school site could use the existing Rosita Park lot for drop off and pick up operations.
    - i. Ingress/egress through Rosita Avenue
  - b. Existing school site can use the existing drop-off and pick-up operations at the school parking lot
    - i. Ingress from WB Covington Road
    - ii. Egress to EB Covington Road
  - c. Expand agreement with St. William Church to use their parking lot for drop off and pick up operations
    - i. Ingress from EB Covington Road
    - ii. Egress to NB El Monte Road

## Other

1. Avoids closing a neighborhood school
2. Enables District to create middle schools to address elementary school enrollment growth
3. Solves the K–6 enrollment growth issue if Blach/Egan take on 6<sup>th</sup> grade

## Disadvantages:

### Traffic

1. Introducing additional school traffic on Rosita Avenue
2. Educate school community on new vehicle routing
  - a. Enforcing and operating drop off and pick up operations
3. Expanding agreement with St. Nicolas for parking lot use and/or identifying a potential access to a collector street
4. Rosita parking needed throughout day
5. El Monte/Covington/Foothill intersections already over-crowded
6. Need to consider using Rosita Avenue as entrance

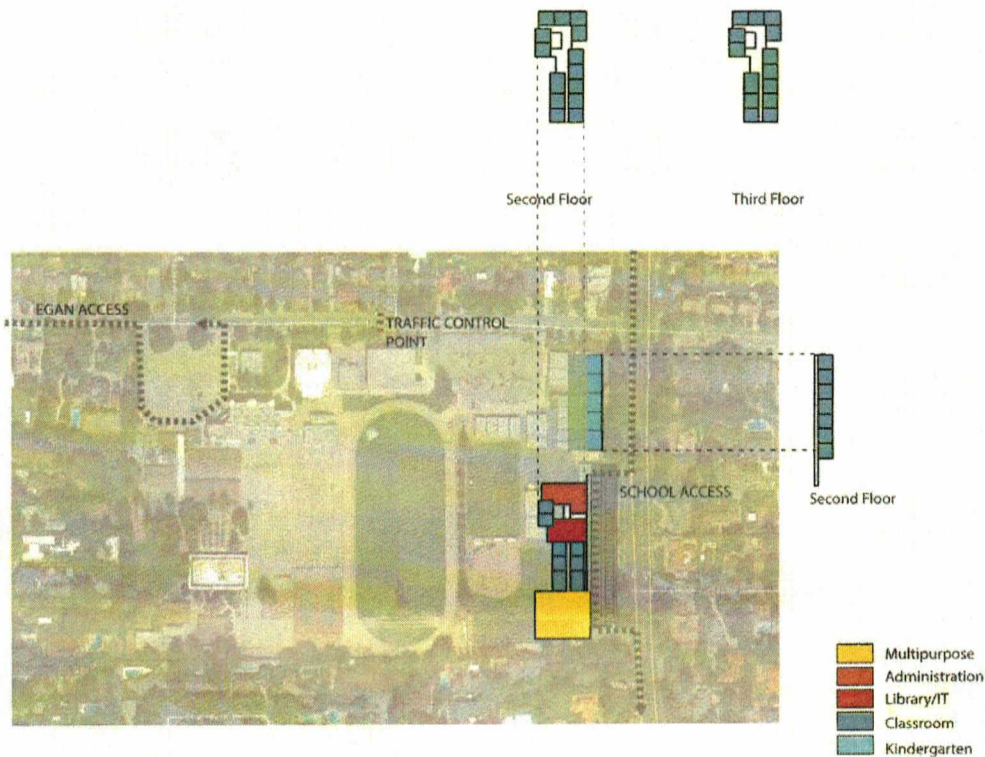
### Other

1. School buildings are very far from existing parking
2. Blacktop and buildings infringe on fields for existing Covington
3. Questionable fire and emergency access to school without removing existing improvements (district office, tennis, baseball)
4. Likely need use of Rosita Park for outdoor play space (for both schools)
5. Net loss of playing field and green space
6. Not close to area of greatest enrollment growth

# Egan School

Acreege: 19 acres

Co-locate BCS with Egan Junior High



Enrollment:	BCS (900 K – 8 students; 200 are grades 7/8)
	Egan JHS (650 students in grades 7/8)

**Note** – City comments in orange; District comments in blue

**Advantages:**

**Traffic**

1. New school access for drop-off and pick-up on San Antonio Road
  - a. Reduced conflicts between pedestrians/cyclists with drop-off/pick-up operations at W. Portola Avenue
  - b. Right turn only exit onto San Antonio Road allows for continuous traffic flow
  - c. New parking lot on San Antonio Road could be designated for parents and volunteers
  - d. Existing parking lot will accommodate school staff
2. Vehicle routing to both schools are separated
  - a. Reduced vehicle congestion on W. Portola Avenue
  - b. Traffic control barrier will be in use during school commute times only and is moveable

## Other

1. Avoids closing a neighborhood school
2. If Egan is reconfigured, no net loss of playing fields
3. Close to area where enrollment growth is greatest

## Disadvantages:

### Traffic

1. Educate school community on new vehicle routing
  - a. Enforcing and operating drop-off and pick-up operations
2. Potential pedestrian/cyclist conflict with drop-off/pick-up operations on San Antonio Road
3. Nearby streets will likely experience increased traffic and drop-off and pick-up operations
4. May require U turns on San Antonio Road; likely impacts Almond Ave intersection
5. LASD traffic will co-mingle with LAHS traffic
6. Increased traffic for Egan will be pushed from West Portola to other neighborhood streets

### Other

1. Need to reorganize fields and blacktop
2. Phasing challenge to locate new school in footprint of existing portables
3. Three story building will look large to Los Altos neighbors
4. Loss of field space

### Cost

1. Requires a partial re-configuration of some of the Egan campus (including new buildings for two schools, not just one) for denser footprint

### Does not solve the K-6 enrollment growth issue

1. Prevents implementation of middle school model (6/7/8)
2. Another elementary school could be added (on Blach campus) but that would now require building 2 schools plus re-building part of another (Egan), and creates huge traffic/safety issues at/around Blach campus

### Shared use of JHS facilities required